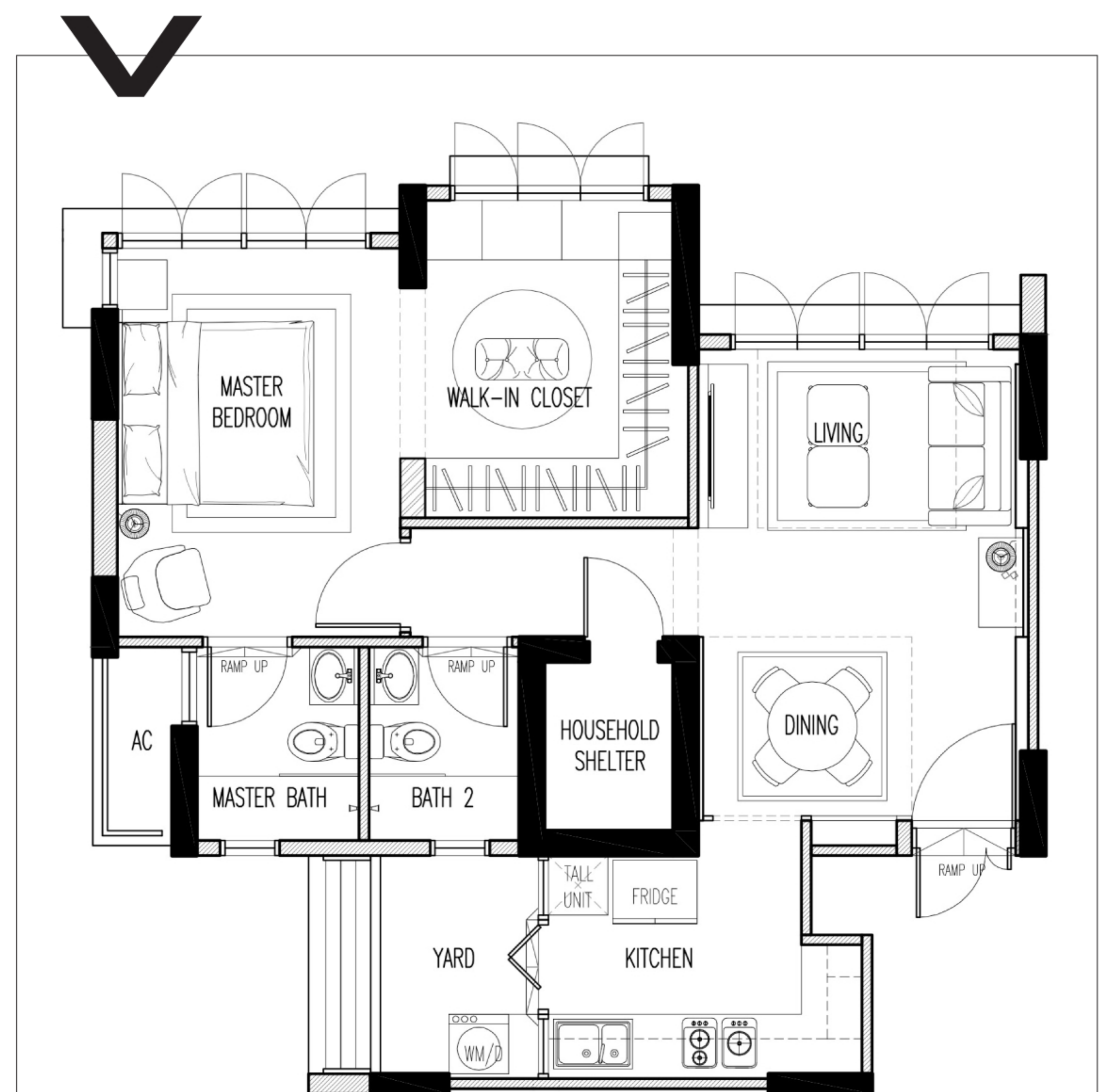




VINTAGE ROMANCE BY NEU KONCEPTZ

This home proves that grand, intricate designs are possible no matter what your floor size is. Just because your home is small doesn't necessarily mean your design needs to be kept simple and pared down. In their proposal, the designers show how layering textures and patterns can give a home its unique designer edge without compromising on space usage.

www.neukonceptz.com.sg



DETAILED FLOOR PLAN

Neu Konzeptz filled up the floor plan with a detailed layout to show how they reconfigured some spaces, such as the spare bedroom, and how they zoned the living and dining area.

*Just because your home is small
doesn't necessarily mean
its design should be simple and pared down.*

Design Tips

• **Use pops of colour to accentuate the home.** A neutral palette of creamy white and taupe takes centre stage in this 3-room flat. But what makes this vanilla colour scheme so successful is the bold addition of accent colours. A teal feature wall lends a striking pop of colour to the living room, and a zesty yellow headboard brightens up the bedroom. These bold hues help with the general colour scheme of the home, appearing in soft furnishings like the ottoman, rugs and even kitchen backsplash.

• **Don't skimp on design elements.** For a home that measures less than 700 sqft, Neu Konzeptz managed to pack in a lot of design elements. By adding lines and patterns, the designers came up with a richly detailed home with touches of Victorian splendour.

• **Lighting plays an important role.** Here, Neu Konzeptz used a balanced mix of spotlights, mini-chandeliers, cove lights and floor lamps to give the owners options for both mood and task lighting. A well-lit space can immediately make a small room look larger, and the interplay of light and shadows works well in this compact 3-room flat.

• **Customise the storage.** Neu Konzeptz's proposal minimises the use of loose furniture, instead relying on built-in pieces that utilise every inch of space. The carpentry work is especially impressive in the walk-in wardrobe. The designers converted the spare bedroom into an ensuite and lined the walls with a myriad of hanging closets, pull-out drawers and sliding mirrors, to great effect.

